

COLODUR (Wear Plate)

Characteristics:

COLODUR wear plate gives, weld deposits of high C-Cr-Nb alloyed weld metal with excellent resistance to extreme abrasion wear. COLODUR weld deposit consists of chrome and niobium carbides which offer an excellent resistance to abrasion. Best results are achieved by two layers hardface wear plate.

Applications:

Parts of coal mining equipment, steel industry, cement industry and mineral industries.

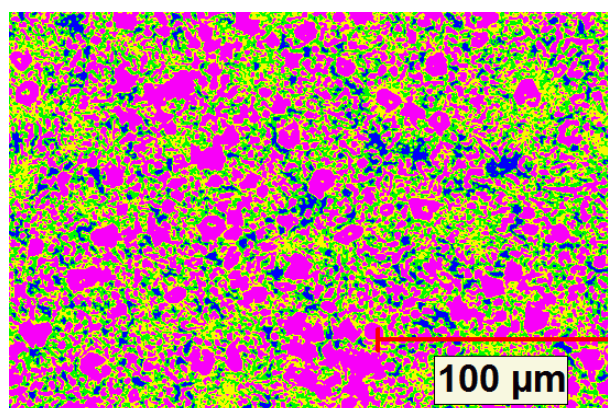
Hardness:

OVERLAY THICKNESS	HARDNESS IN RC
4.00 mm	58 – 61
8.00 mm	59 – 62

Major Alloying Elements:

C	Cr	Nb
---	----	----

Typical Image Analysis Report Of DIFFUSION COLODUR:



Remarks: Microstructure shows primary chromium carbide, niobium carbide, along with austenite and martensite.

DIFFUSION ENGINEERS LIMITED

Regd. Office & Works I : T-5/6, M.I.D.C, Hingna Industrial Area, Nagpur-440 016, (T) 091-7104-232084, 234727 (F) 232085

Works II : N-78/79, MIDC, Hingna Industrial Area, Nagpur – 440 016. (T) 091-7104-236036

Works III : T-12, MIDC, Hingna Industrial Area, Nagpur – 440 016.(T) 091-7104-232984

Email : info@diffusionengineers.com Website : www.diffusionengineers.com

Branch Offices : Chennai, Faridabad, Jamshedpur, Pune, Raipur, Secunderabad, Vadodara.