

DIFFUSION CORDIFF TT 400 (wear plate)

Characteristics:

CORDIFF TT 400 wear plate is specially deposited with highly alloyed special metals for hardfacing of parts which are subjected to extreme wear and impact. The alloy primarily consists of primary Cr carbides and other complex carbides.

Wear plate has extremely wear resistant weld metal which can withstand and perform under the condition of impact and wear.

Applications:

Used for hardfacing on parts subjected to extreme wear and impact. Screens, wear plates etc.

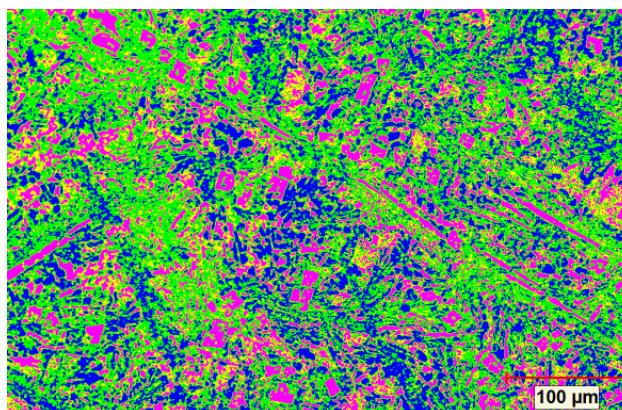
Hardness:

OVERLAY THICKNESS	HARDNESS IN RC
4.00 mm	48 – 55
8.00 mm	53 – 58

Major Alloying Elements:

C	Si	Mn	Cr	Ni	B
---	----	----	----	----	---

Typical Image Analysis Report Of DIFFUSION CORDIFF TT400 wear plate:



Remark: Microstructure shows primary chromium carbide and eutectic carbides along with austenite and martensite.

DIFFUSION ENGINEERS LIMITED

Regd. Office & Works I : T-5/6, M.I.D.C, Hingna Industrial Area, Nagpur-440 016, (T) 091-7104-232084, 234727 (F) 232085

Works II : N-78/79, MIDC, Hingna Industrial Area, Nagpur – 440 016. (T) 091-7104-236036

Works III : T-12, MIDC, Hingna Industrial Area, Nagpur – 440 016.(T) 091-7104-232984

Email : info@diffusionengineers.com Website : www.diffusionengineers.com

Branch Offices : Chennai, Faridabad, Jamshedpur, Pune, Raipur, Secunderabad, Vadodara.