

IMPACTODUR (Wear Plate)

Characteristics:

IMPACTODUR is a wear plate, which contains a high C-Si-Cr alloyed hardface weld deposit with moderate resistance to abrasion under high impact. Best results are achieved by double layer wear plate.

Applications:

Build up of crusher parts, bucket teeth and lips, trash crushing

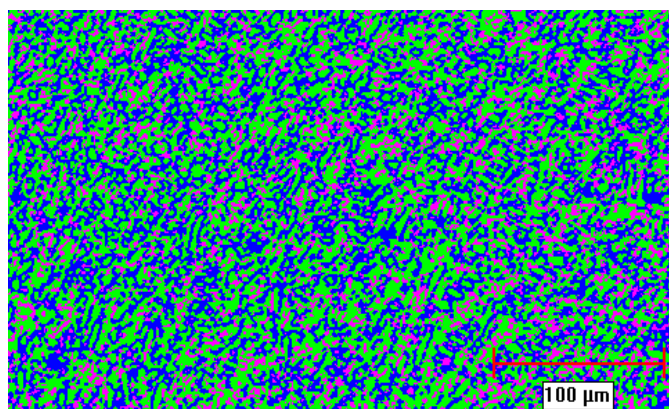
Hardness:

OVERLAY THICKNESS	HARDNESS IN RC
4.00 mm	48 – 52
8.00 mm	51 – 55

Major Alloying Elements:

C	Si	Cr
---	----	----

Typical Image Analysis Report Of DIFFUSION IMPACTODUR:



Remarks: Microstructure shows Eutectic Carbides in the matrix of Martensite & Austenite

DIFFUSION ENGINEERS LIMITED

Regd. Office & Works I : T-5/6, M.I.D.C, Hingna Industrial Area, Nagpur-440 016, (T) 091-7104-232084, 234727 (F) 232085

Works II : N-78/79, MIDC, Hingna Industrial Area, Nagpur – 440 016. (T) 091-7104-236036

Works III : T-12, MIDC, Hingna Industrial Area, Nagpur – 440 016.(T) 091-7104-232984

Email : info@diffusionengineers.com Website : www.diffusionengineers.com

Branch Offices : Chennai, Faridabad, Jamshedpur, Pune, Raipur, Secunderabad, Vadodara.